



Swing Barrier

SB-SPL-310



Specification

Product Size : 200*200*980mm

Pass Width : 600mm (Optional : 900mm)

Thickness : SS 1.2mm

Housing Material : Stainless Steel 304

Arm Material : Stainless Steel frame

Pass rate : 20-25 Persons/minute

Power Supply : 100-240V (AC)

Operational Voltage : 24V (DC)

Max Power Consumption : 35w

Frequency : 50-60 Hz

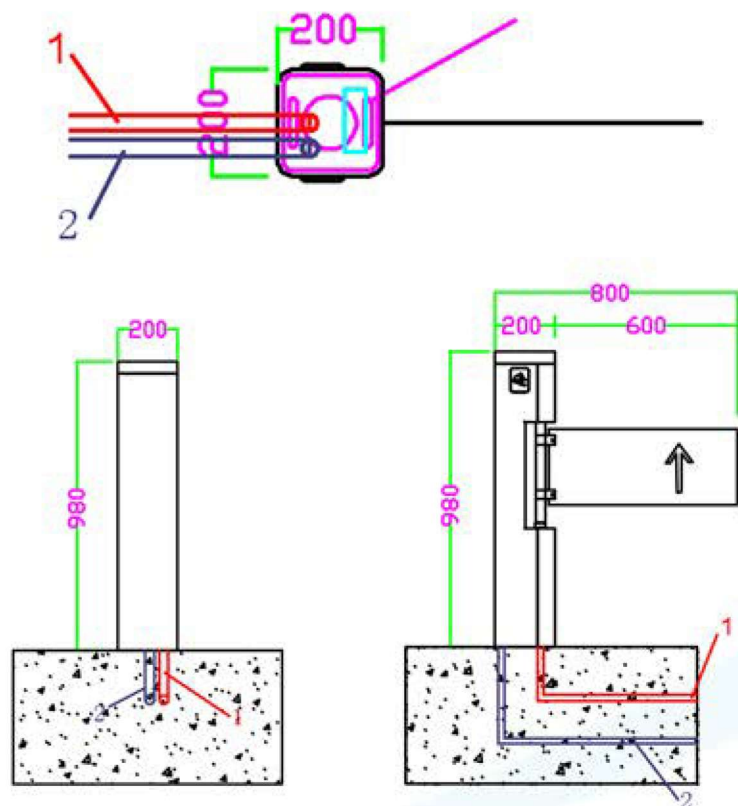
Working Temperature : -25 to +70°C

Operating Modes : Bi-directional

with Single passage

Operating Time : 0.2 Seconds

(M12X90mm Expansive Bolt)



Disclaimer: Brief specifications are mentioned here. Specifications may change without prior notice. Customers are advised to check with us before purchase. Actual product may differ slightly to that depicted for ongoing product development